



# LoCATE



## Local Community Archaeological Training & Equipment Project

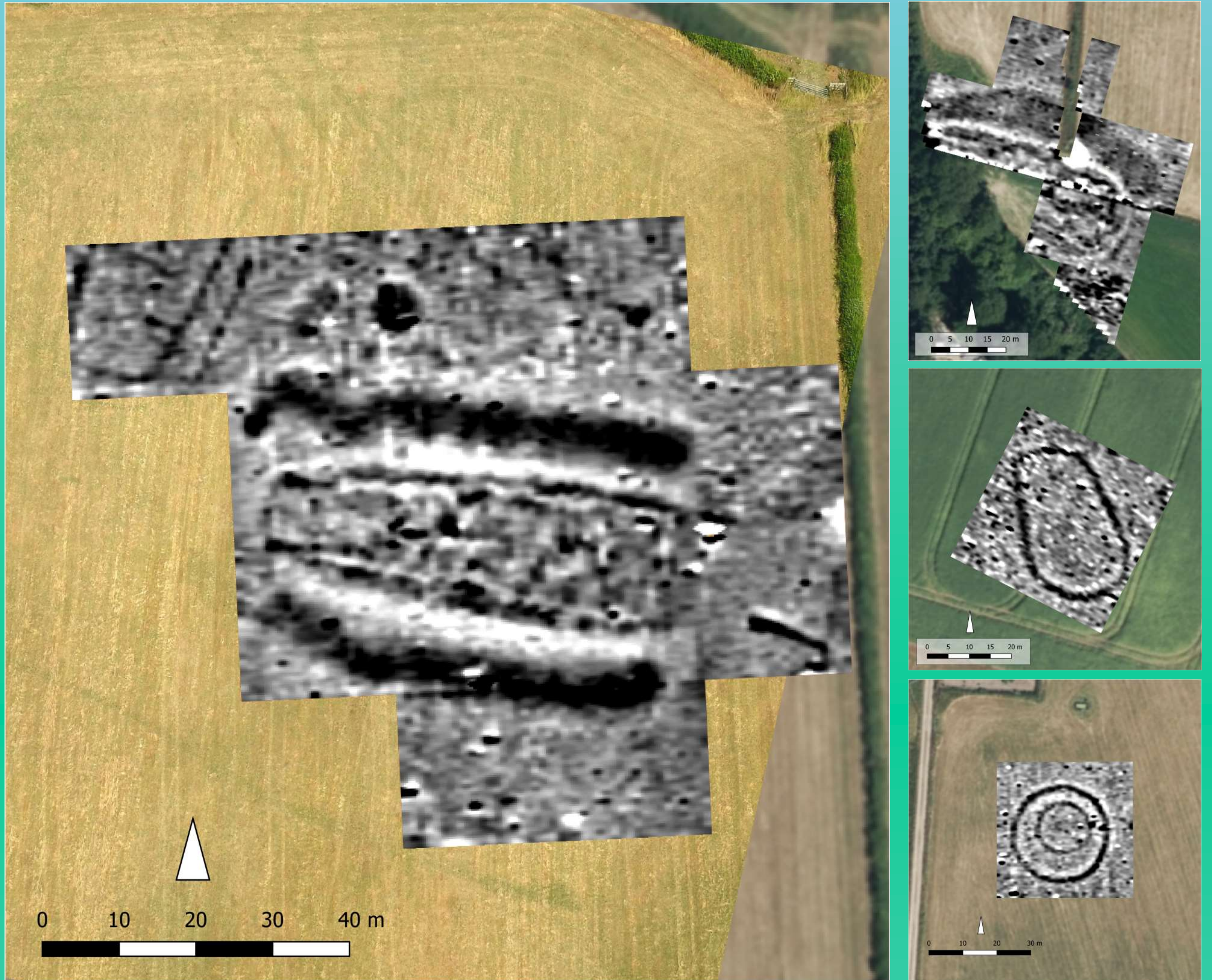
Kate Welham<sup>1</sup>, Paul Cheetham<sup>1</sup>, Lawrence Shaw<sup>2</sup> & Mike Gill<sup>3</sup>

The Local Community Archaeological Training and Equipment Project is a partnership between archaeologists at BU and the New Forest National Park Authority (NFNPA). Working with archaeological societies and community groups from across Dorset and Hampshire, the project provides access, training, and support for the use of advanced survey equipment that would otherwise be hard to get access to. LoCATE aims to support the research that local groups already do by extending the range of techniques and skills they can use. Our goal is to enable an even greater contribution to the understanding of the rich archaeological heritage of our region.

## The Fordingbridge Barrow Group

Avon Valley Archaeological Society (AVAS) is a typical local archaeology group operating in the vicinity of the Hampshire Avon. The Society was eager to investigate and validate a number of sites discovered through aerial photography, but lacked the budget and technical skills to undertake geophysical survey. The LoCATE project was able to transform this situation.

The society has been able to survey a remarkable concentration of monuments in the Fordingbridge area, confirming the presence of two previously unrecorded Neolithic long barrows as well as an oval barrow and double ring ditch. This has been complemented by the discovery of another long barrow on Cranborne Chase which is a staggering 112m in length - longer than the pitch at Wembley!



## A Grand Day Out!

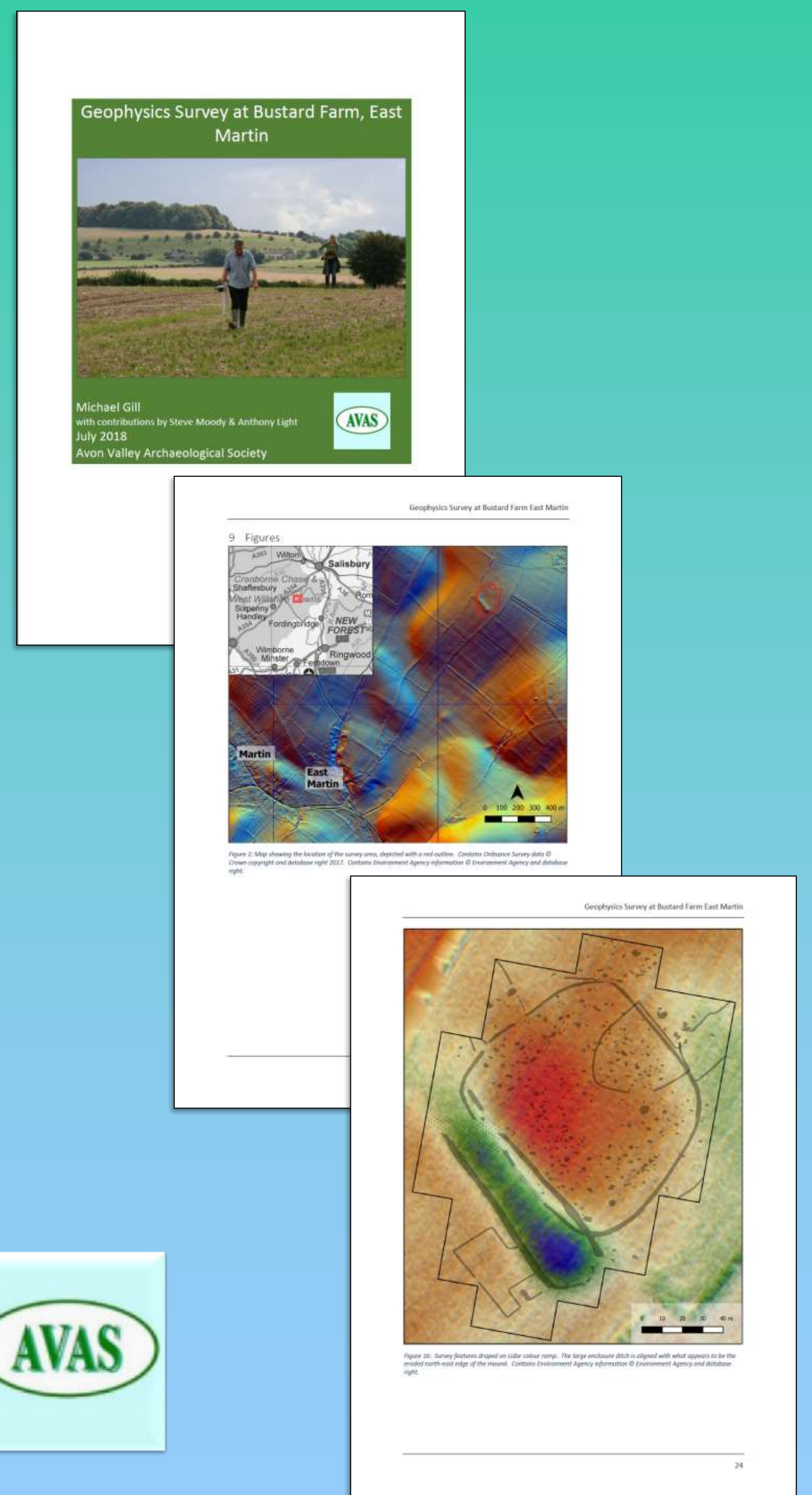
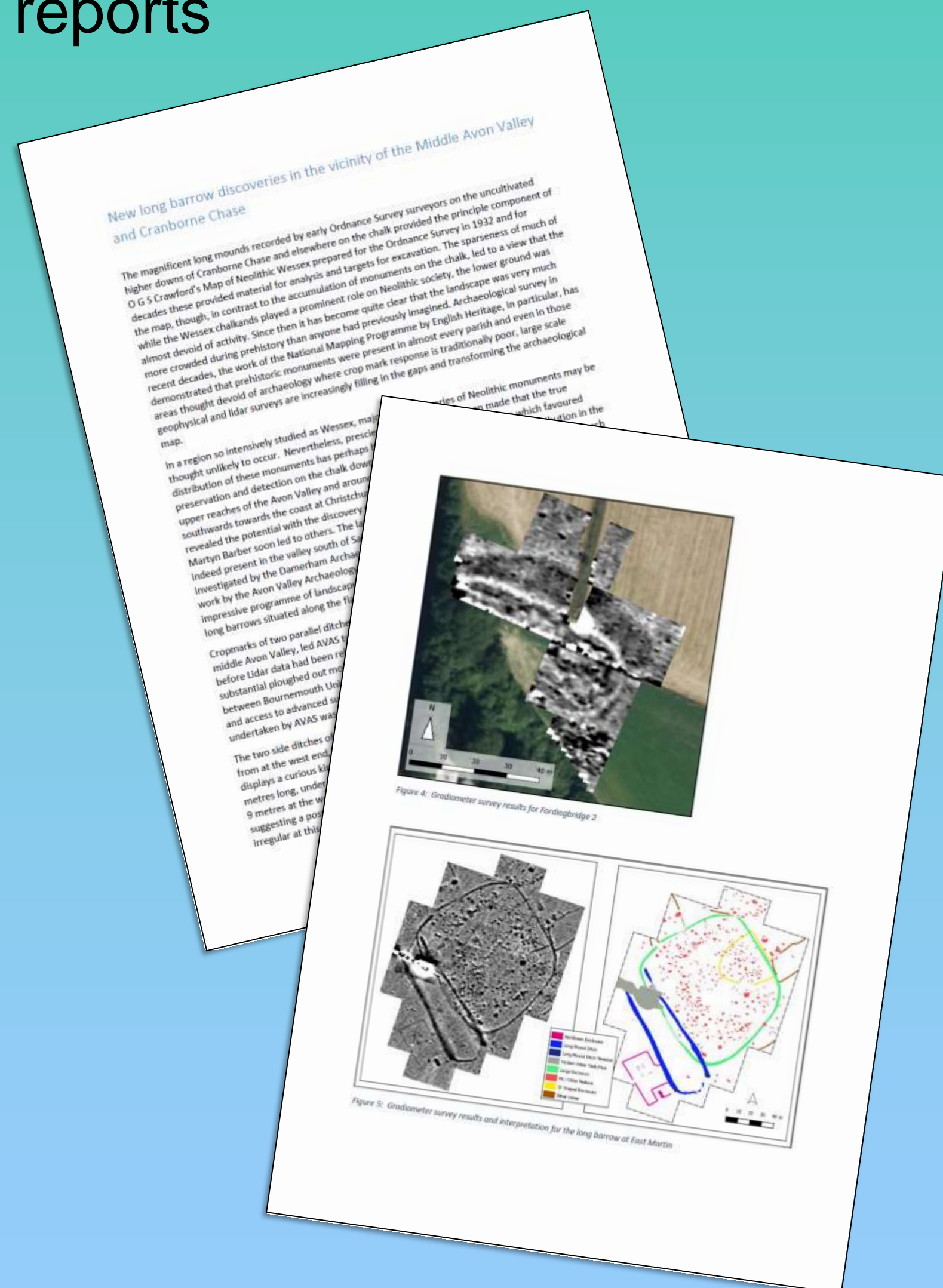
AVAS members enjoying getting to grips with the equipment and doing some serious survey.



The successful survey results are perhaps transcended by the social benefits of the project: the fun and excitement experienced by AVAS members, young and old, being able to get out in the field, in all weathers, and enjoy making a positive contribution to the understanding of our local heritage.

## Reports

AVAS has fulfilled its ethical commitments to the project by producing high quality survey reports



**Affiliations**  
1 – Department of Archaeology, Anthropology and Forensic Sciences, Bournemouth University. Email: pcheetham@bournemouth.ac.uk  
2 – New Forest National Park Authority Email: lawrence.shaw@newforestnpa.gov.uk  
3 – Avon Valley Archaeological Society (AVAS) Email: Michael Gill <mjg.gbr@gmail.com>



**Other Groups and Organisations participating in the LoCATE Project**

The Christchurch Antiquarians  
Dorset Diggers Community Archaeology Group  
East Dorset Antiquarian Society (EDAS)

Local History Broadmayne  
New Forest History and Archaeology Group  
New Forest National Park Authority Volunteers