

---

## LoCATE - The Local Community Archaeological Training and Equipment Project

Kate Welham<sup>(1)</sup>, Paul Cheetham<sup>(1)</sup>, Lawrence Shaw<sup>(2)</sup>, Michael Gill<sup>(3)</sup>

<sup>(1)</sup>Department of Archaeology, Anthropology & Forensic Science, Bournemouth University

<sup>(2)</sup>New Forest National Park Authority

<sup>(3)</sup>Avon Valley Archaeological Society

[kwelham@bournemouth.ac.uk](mailto:kwelham@bournemouth.ac.uk)

---

LoCATE (Local Community Archaeological Training and Equipment) is a partnership between archaeologists at BU and the New Forest National Park Authority (NFNPA). Working with archaeological societies and community groups from across Dorset and Hampshire, the project provides access, training, and support for the use of advanced survey equipment that would otherwise be hard to get access to. LoCATE aims to support the research that local groups already do by extending the range of techniques and skills they can use. Our goal is to work enable an even greater contribution to the understanding of the rich archaeological heritage of our region.

The initial training day was held in the New Forest in December 2015 with 7 different groups represented.

- Avon Valley Archaeological Society (AVAS)
- The Christchurch Antiquarians
- Dorset Diggers Community Archaeology Group
- East Dorset Antiquarian Society (EDAS)
- Local History Broadmayne
- New Forest History and Archaeology Group
- New Forest National Park Authority Volunteers



Figure 1: LoCATE training day (Photo: L Shaw)

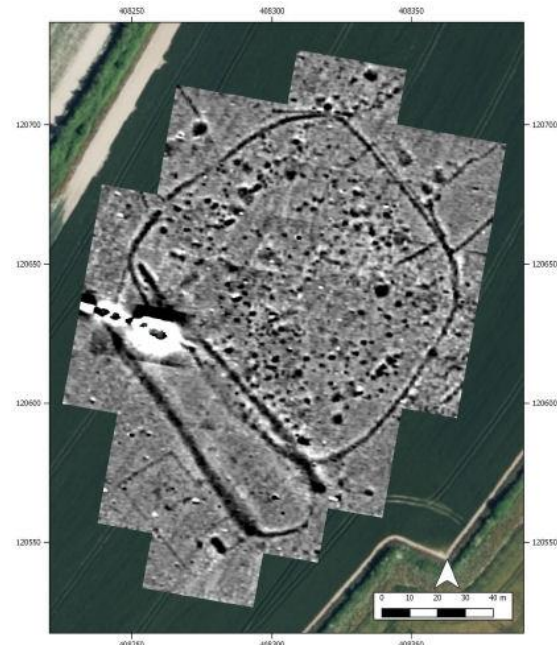
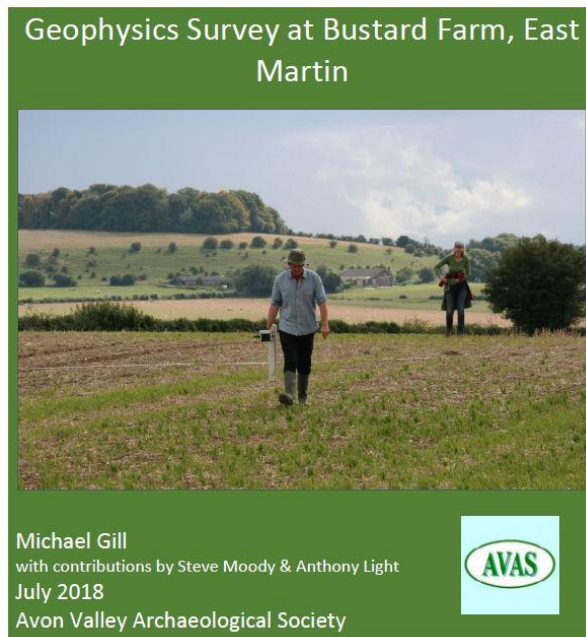
Since then further training days have been organised with these and other societies and groups.

LoCATE is organised by a BU staff, Prof. Kate Welham and Paul Cheetham, and affiliate researcher Lawrence Shaw of the NFNPA. The first instrument made available was a Geoscan Research FM36 followed a year later by a Geoscan Research RM15, both redundant BU instruments. Most recently a total station has been added to the equipment pool, funded through the Heritage Lottery Funding (Our Past and Our Future, Landscape Partnership

Scheme) and the Hampshire Field Club and Archaeological Society. Access to the equipment is managed through the New Forest's volunteer equipment loan system.

### Case Study: Avon Valley Archaeological Society (AVAS)

To date the Avon Valley Archaeological Society has been the most frequent user of the LoCATE geophysical equipment and has produced some stunning results under the guidance of member Michael Gill. The Society uses Dave Staveley's Snuffler freeware geophysics software to process their geophysical data (Staveley 2018).



Figures 2 and 3: Report cover & FM36 gradiometry results from Bustard Farm, East Martin (Hampshire)

In September 2017, AVAS undertook a gradiometer survey of a long mound, and adjacent enclosures, to the north east of Bustard Farm, East Martin. The Royal Commission on the Historical Monuments of England (Bowden 1990) had previously visited the site and plotted cropmarks from aerial photographs. At that time, the long mound was said to be 'of uncertain origins'. The current survey aimed to investigate further the long mound and establish its relationship to the adjacent Romano-British enclosure. The results of the gradiometer survey suggest the long mound is a possible earthen long barrow. The results have also clearly defined the large Romano-British enclosure to the north east of the long mound, as well as revealing a previously unrecognised rectilinear enclosure to the south west of the mound.

The poster presented at the conference includes further examples of AVAS survey successes.

### Sources:

Bowen, H 1990 *The Archaeology of Bokerley Dyke*. London: HMSO

Staveley, D 2018 *Snuffler - Freeware Geophysics Software*. Available from:

<http://www.sussexarch.org.uk/geophys/snuffler.html>