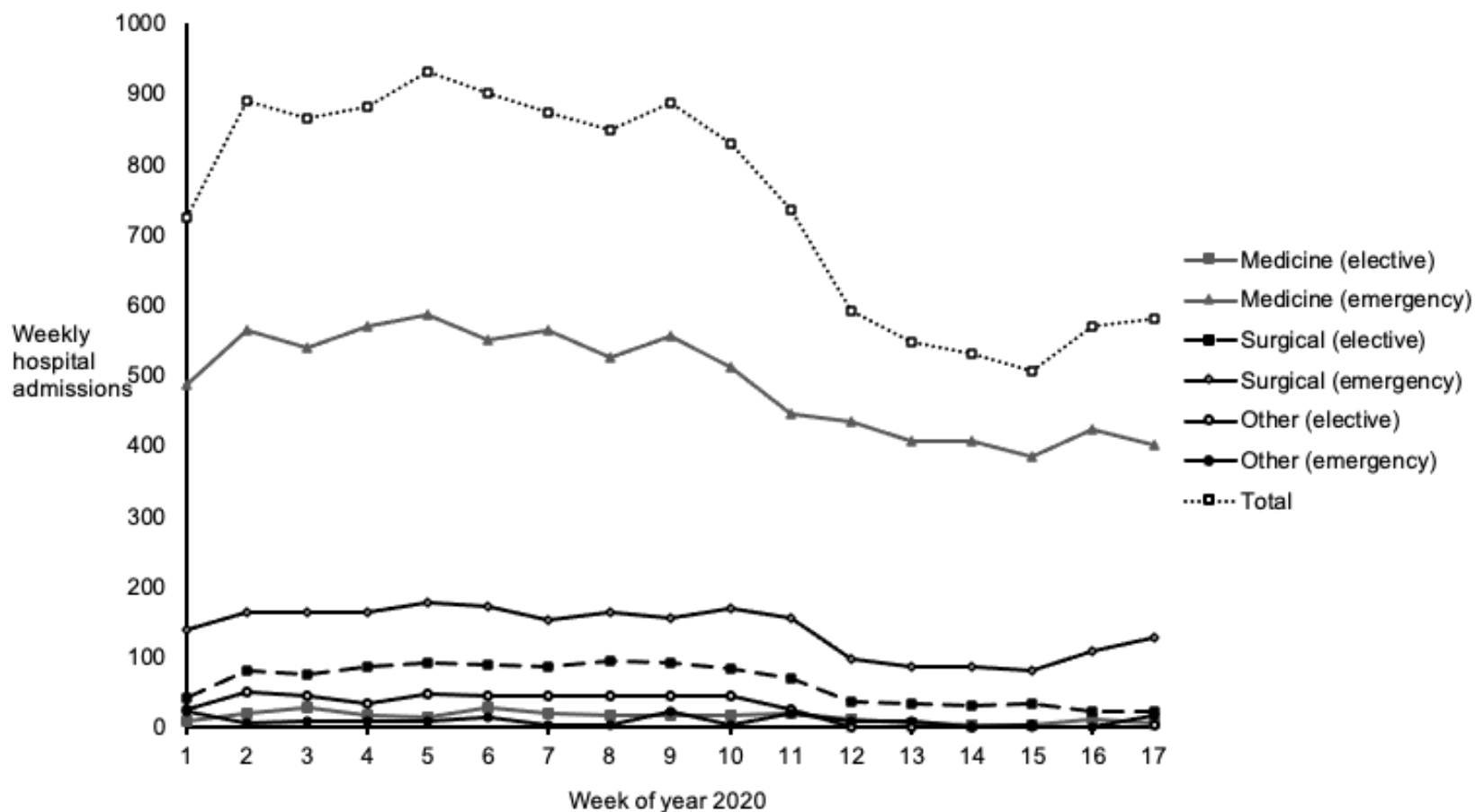
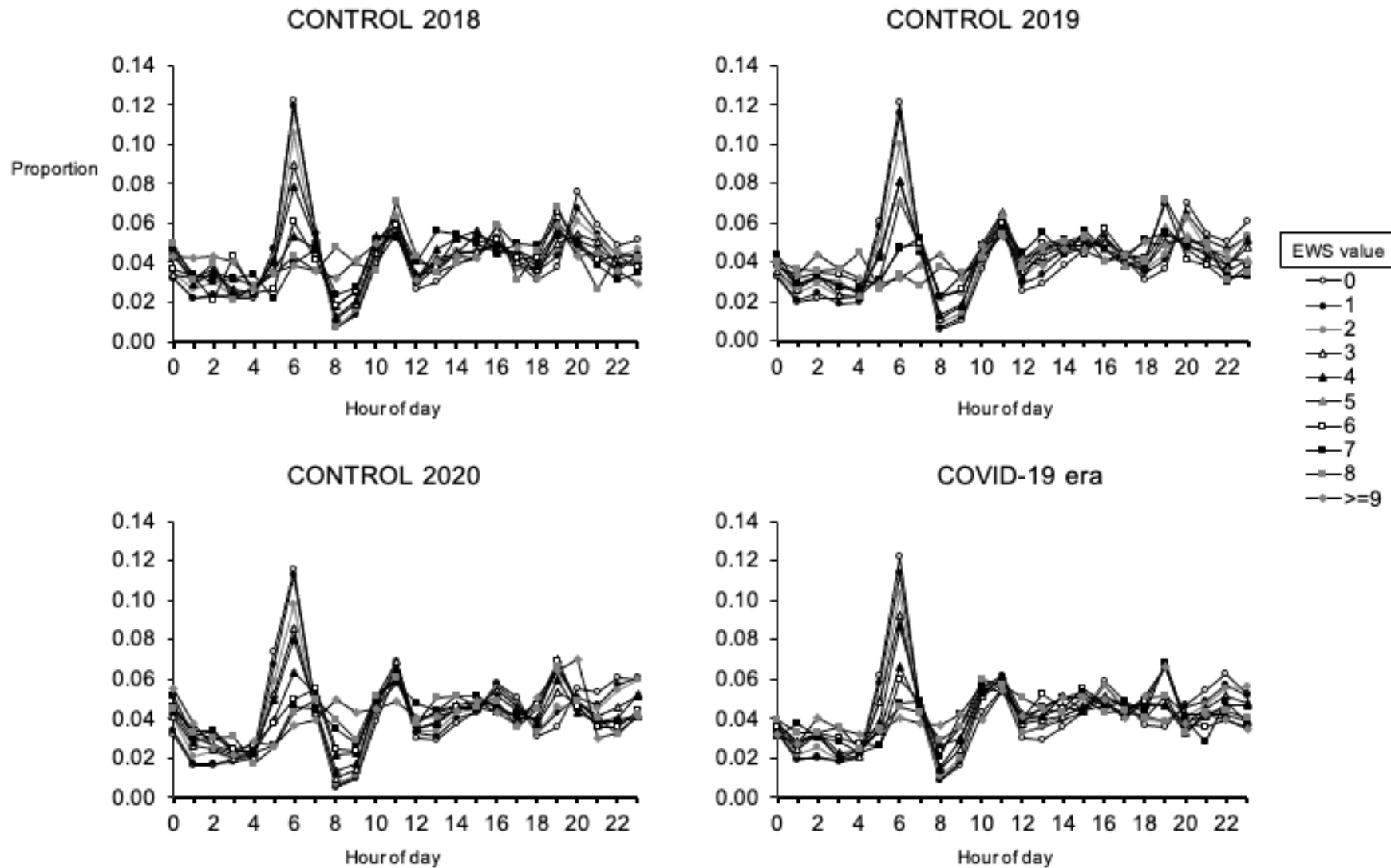


Supplementary file for Kostakis et al. 'Impact of the coronavirus pandemic on the patterns of vital signs recording and staff compliance with expected monitoring schedules on general wards'

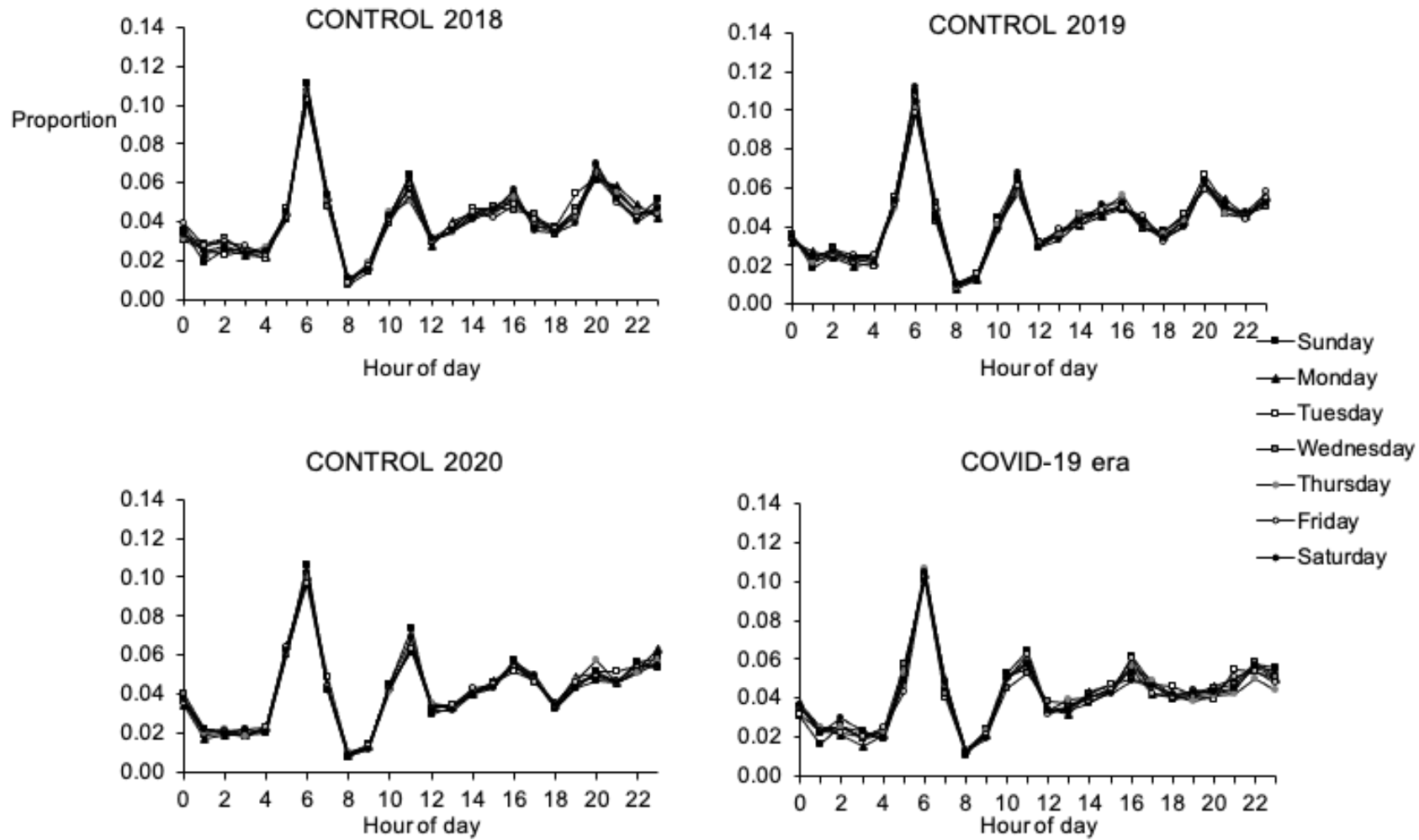
Supplementary Figure 1: Weekly hospital admission numbers (total and specialty) during the period 01/01/2020 to 30/04/20



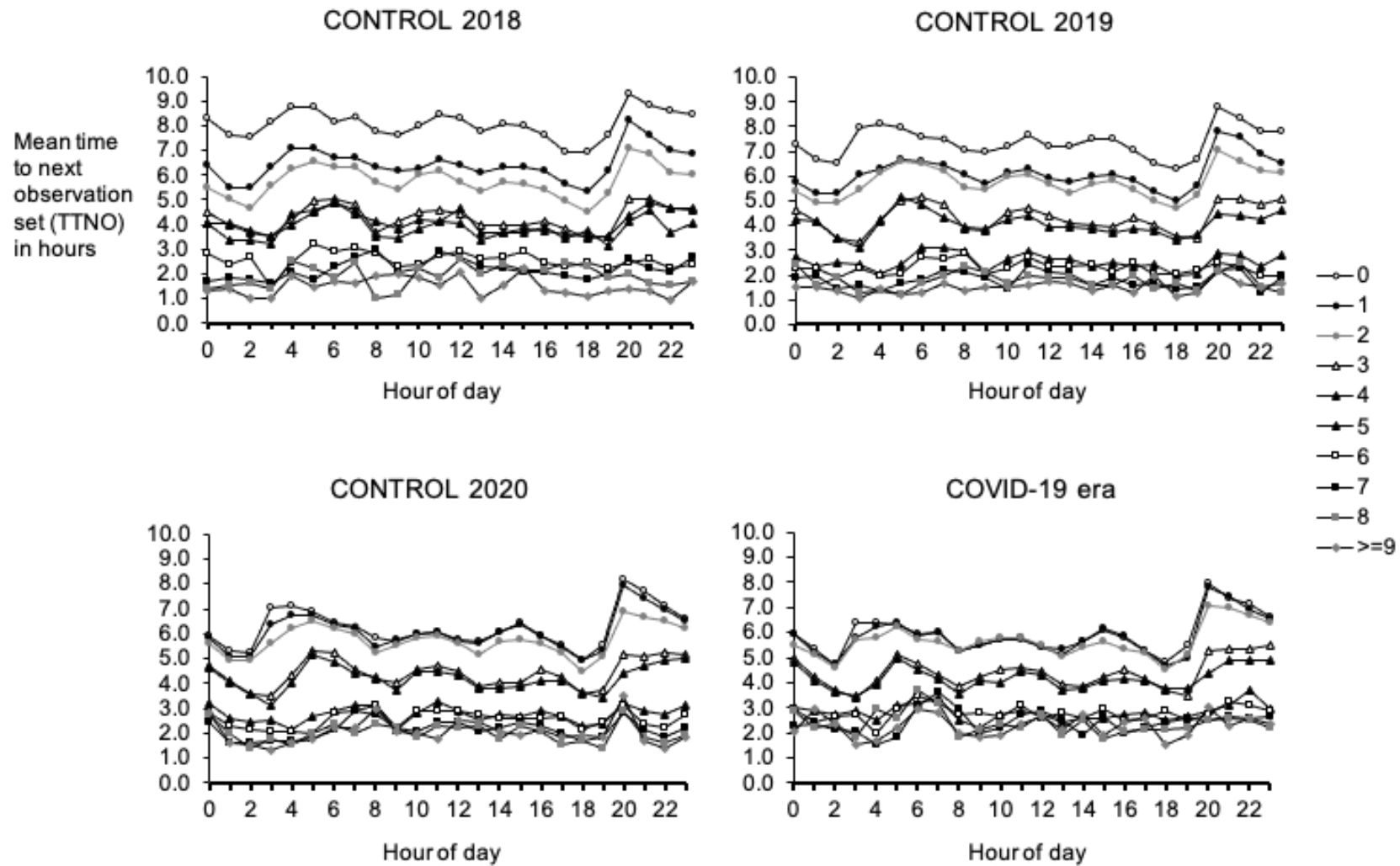
Supplementary Figure 2: Recorded vital signs sets, stratified by EWS value and collection hour and expressed as a proportion of the total number in that EWS group during the 24 h period.



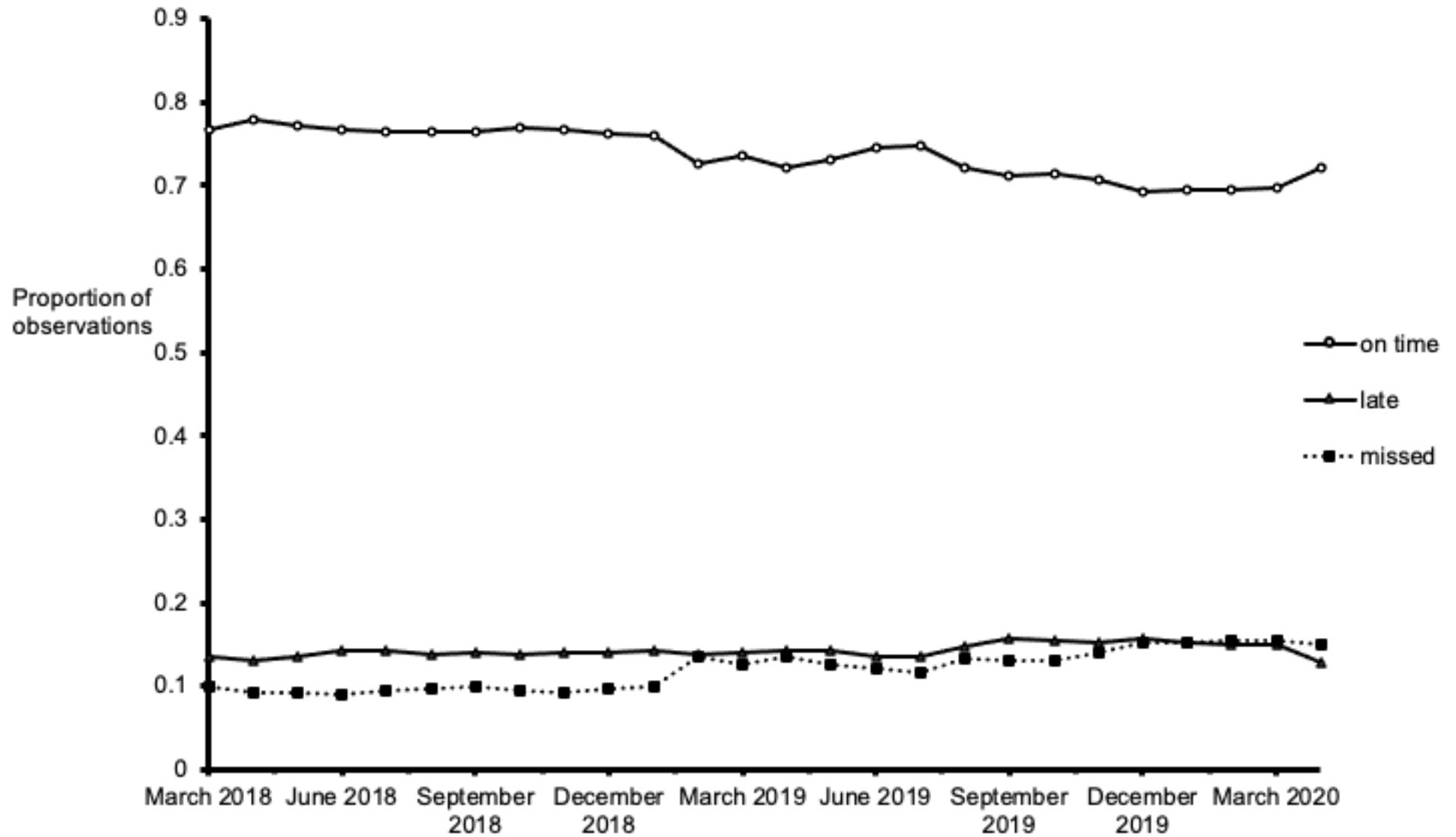
Supplementary Figure 3: Pattern of vital signs observation sets recorded each hour of the day, categorised by day of week.



Supplementary Figure 4: Mean time to next observation (TTNO), stratified by EWS value and collection hour.



Supplementary Figure 4: Proportion of 'on time', 'late' and 'missed' observations over time from March 2018 to March 2020.



Supplementary Table 1: Percentages of 'on time' vital sign sets were lower for the four study periods, stratified by three EWS groups.

| EWS value | CONTROL 2018 | CONTROL 2019 | CONTROL 2020 | COVID-era | p-value COVID vs. CONTROL 2018 & CONTROL 2019 | p-value COVID vs. CONTROL 2018 | p-value COVID vs. CONTROL 2019 | p-value COVID vs. CONTROL 2020 |
|------------------|---------------------|---------------------|---------------------|------------------|--|---------------------------------------|---------------------------------------|---------------------------------------|
| 0-2 | 82 | 80.1 | 77.5 | 80.5 | <0.001 | <0.001 | 0.054 | <0.001 |
| 3-5 | 67.1 | 54.1 | 52.2 | 55.9 | <0.001 | <0.001 | <0.001 | <0.001 |
| >=6 | 52.7 | 28.6 | 25 | 28.2 | <0.001 | <0.001 | 0.597 | <0.001 |