

# An Automated Approach for Timely Diagnosis and Prognosis of Coronavirus Disease

1<sup>st</sup> Abbas Raza Ali

Faculty of Science and Technology  
Dept. of Computer Science, New York University  
Abu Dhabi, UAE  
abbas.raza.ali@gmail.com

2<sup>nd</sup> Marcin Budka

Faculty of Science and Technology  
Dept. of Computing and Informatics, Bournemouth University  
Poole, UK  
mbudka@bournemouth.ac.uk

**Abstract**—Since the outbreak of Coronavirus Disease 2019 (COVID-19), most of the impacted patients have been diagnosed with high fever, dry cough, and soar throat leading to severe pneumonia. Hence, to date, the diagnosis of COVID-19 from lung imaging is proved to be a major evidence for early diagnosis of the disease. Although nucleic acid detection using real-time reverse-transcriptase polymerase chain reaction (rRT-PCR) remains a *gold standard* for the detection of COVID-19, the proposed approach focuses on the automated diagnosis and prognosis of the disease from a non-contrast chest computed tomography (CT) scan for timely diagnosis and triage of the patient. The prognosis covers the quantification and assessment of the disease to help hospitals with the management and planning of crucial resources, such as medical staff, ventilators and intensive care units (ICUs) capacity. The approach utilises deep learning techniques for automated quantification of the severity of COVID-19 disease via measuring the area of multiple rounded ground-glass opacities (GGO) and consolidations in the periphery (CP) of the lungs and accumulating them to form a severity score. The severity of the disease can be correlated with the medicines prescribed during the triage to assess the effectiveness of the treatment. The proposed approach shows promising results where the classification model achieved 93% accuracy on hold-out data.

**Index Terms**—assessment of treatment, computed tomography, explainable AI, diagnostic imaging, quantification of disease, radiography

## I. INTRODUCTION

The Coronavirus Disease 2019 (COVID-19), caused by Severe Acute Respiratory Syndrome Corona-virus 2 (SARS-CoV-2), has proven to be highly infectious. The impact of the disease is such that the World Health Organization (WHO) has declared it a global pandemic in March 2020, just over 2 months after the first cases have been reported in China [1]. The exponential growth of COVID-19 cases raises a need for timely diagnosis of the disease to control its further spread. The nucleic acid detection using real-time reverse-transcriptase polymerase chain reaction (rRT-PCR) test is considered the *gold standard* for the detection of COVID-19 [2]. However, studies show that this test is inadequate to effectively diagnose the disease due to several reasons including high-rate of false-negative indications [3]–[11], limited availability of testing kits in several countries [8], [9], [12], and high-turnaround time of the test which normally takes from few hours up to two days [4]–[9], [13]. Thus, a negative rRT-PCR result does not

have to indicate a lack of COVID-19 infection, hence relying only on this test won't be sufficient for the accurate diagnosis of the disease [10], [14].

The constraints of rRT-PCR can be comprehended by combining it with clinical examinations such as a non-contrast chest computed tomography (CT) scan. Chest CT is regarded as evidence of a clinical diagnosis of COVID-19 which is playing a crucial role in diagnosing the disease at the early phase of constraining viral transmission [5]. Typical signs of the infection observed at the early stage from CT scan are multiple rounded ground-glass opacities (GGO) followed by pulmonary consolidations in the periphery (CP) of the lung at the later stage. In recent studies, a significant number of COVID-19 cases, about 8 in 10, are reported with mild symptoms [15] where signs of infection include fever, nasal obstruction, runny nose, dry cough, sore throat, fatigue, respiratory symptoms, dyspnea, myalgia, and diarrhoea [1]. Moreover, even asymptomatic patients hospitalised for observation showed lung abnormalities on a CT scan, ranging from GGO to CP [16].

In order to address the discrepancies of rRT-PCR, effective and efficient diagnosis and triage of COVID-19 are urgently needed. Therefore, an automated medical imaging-based approach to identify COVID-19 from the chest CT scan has been proposed in this paper. We have achieved automated diagnosis of the disease using deep learning [17] techniques, able to instantly identify radiographic changes from the CT scans, allowing to make the diagnosis much earlier than the pathogenic testing like rRT-PCR, which can, in turn, save critical time for minimising the spread of the virus [18]. In the proposed approach, once a patient is diagnosed as positive at an early stage, the same diagnostic process repeats periodically during the course of the treatment. Along with the diagnosis of the disease, an important aspect is the quantification of its impact. One way of achieving it using CT is by computing the diameter of multiple patchy areas of GGO and shadows of the CP of the lungs [19], [20]. This quantification of the disease serves two purposes, 1) monitoring the progression of the disease over time, and 2) in the absence of a vaccine, assessment of the treatment by correlating the effectiveness of the general medication prescribed to a patient. The medication includes cough syrup,

*ibuprofen* [21], [22], *acetaminophen* [22], non-steroidal anti-inflammatory drugs (NSAIDs) [23], anti-inflammatory drug *dexamethasone* [24] and anti-malaria drugs, namely hydroxy-chloroquine (HCQ) and chloroquine (CQ) along with anti-viral medication *remdesivir*. However, due to heartbeat irregularity side-effects associated with HCQ, it is no longer prescribed to COVID-19 patients in some countries [14].

The proposed approach revolves around an automated classification and measurement of COVID-19. The high-precision has been achieved by training chest CT segmentation and classification models using deep learning techniques. These techniques usually require large datasets to train (in excess of 1000 examples per class for a relatively simple classification task) that are not available particularly for COVID-19. Therefore, transfer learning has been used to adapt a pre-trained network, which was originally trained on a large dataset - ImageNet [25], on a new domain having a comparatively small number of chest CT images. Here, transfer learning is used in combination with Meta-level Learning (MLL) to choose an optimal architecture, the approach suggested by [26], and its Hyper-parameters Optimization (HPO) [27] which could effectively adapt to a new domain. The deep learning techniques have been shown to work better if only critical, noise-free areas of the scan are fed for diagnosis [28]. Hence, before passing the image to the classification model, an existing deep learning-based image segmentation model of [29] has been applied to the raw images as a pre-processing step to extract the interesting features [30]–[32]. The COVID-19 positive classified cases are further quantified to measure the severity of the disease. To this end, the area of all the GGO and CP identified during classification are accumulated to compute an overall severity level. The classification and quantification processes repeat periodically until the patient is fully recovered and the severity score approaches zero. The severity is plotted on a timeline to help medical staff analyse the history of the patient along with the progression of the disease over time (see Figure 5 for an example). For the recovered patients, the timeline is correlated with the prescribed medications to get an indication of their effectiveness. This analysis also explains the patterns of patients' clinical data, such as age, gender, location, initial symptoms, and prior medical history versus the medications which leads to recovery. The novelty of this work is the development of an end-to-end pipeline for real-time diagnosis, quantification, progression analysis, and assessment of the medication to improve the overall treatment process of the COVID-19.

The remainder of this paper is organised as follows. Section II further elaborates the proposed approach. This section covers the datasets used to train and validate the chest CT classification model. The disease quantification and assessment of treatment based on the severity of the diagnosis are also covered in this section. The results of various experiments have been presented in Section III. The paper is concluded in Sections IV and V.

## II. METHODOLOGY

The proposed approach is capable of providing a timely diagnosis of COVID-19 along with quantification, progression, and assessment during the course of the treatment. These four phases are interlinked with each other where the process initiates with automated diagnosis of the suspected case. The non-contrast chest CT is found to be the most effective clinical examination for the diagnosis of the disease since its outbreak [13]. In order to make the diagnosis efficient, a medical imaging-based model for the chest CT was trained using deep learning techniques to accurately discriminate COVID-19 positive from negative cases. The classification results of each consecutive CT scan have been recorded in the Electronic Health Record (EHR) system along with the clinical information of a patient. The results include positive or negative classification of the disease and for positive cases, the measurement of the infected segments [7].

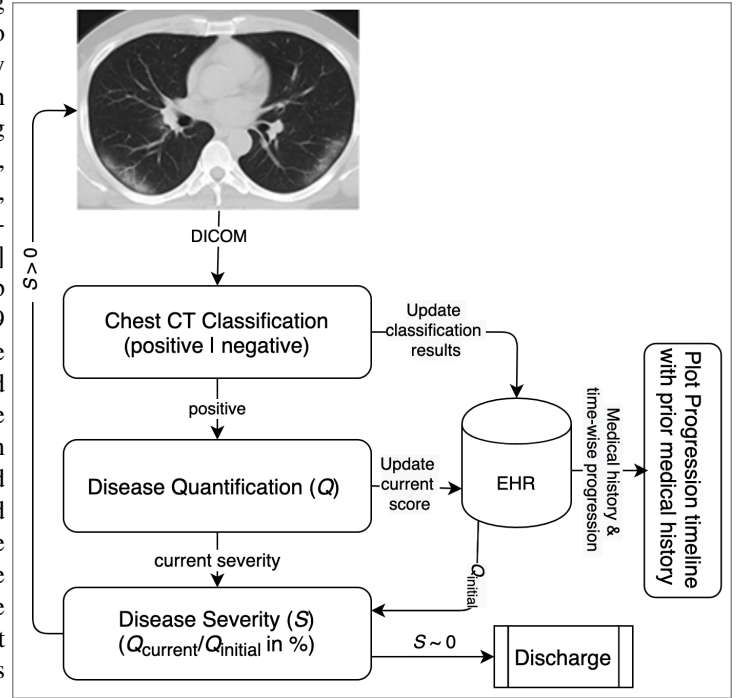


Fig. 1. Early diagnosis and prognosis of the COVID-19 treatment workflow

The initial diagnosis has been used for early detection of the disease which can be later cross-checked with the results of rRT-PCR. Moreover, the early clinical diagnosis has proved effective for the patients showing at least mild symptoms which are mentioned earlier [33]. Once a patient is confirmed with COVID-19 (using either rRT-PCR or the approach proposed in this paper) and admitted for treatment, the monitoring process is initiated which periodically repeats the same diagnosis and quantification procedure to analyse the progression of the disease over the course of the treatment. The progression of the disease has been quantified by estimating the size of the abnormalities (GGO and CP) found during the diagnosis. The disease progression can be visualised over

time since the beginning of the treatment to help medical staff assess the effectiveness of medication (Figure 5). In the absence of the vaccine, this system can also correlate the progression of the disease with the prescribed medicines which are primarily not developed for COVID-19. However, due to lack of access to relevant data, the correlation analysis has not been performed in this study. The workflow of the four-phase process is shown in Figure 1.

The following sections elaborate on the approach used to pre-process the training data, chest CT modelling, quantification of the disease from the positive cases, and their assessment by correlating the severity level with the prescribed medicines.

#### A. Diagnosis

The chest CT features generally observed in COVID-19 patients are bilateral multiple rounded GGO, CP, calcification, and lesion distribution [34]–[37]. In order to train a model that can discriminate scans pertaining these features from the normal ones, a dataset of COVID-19 patients’ chest CT scans were acquired from multiple sources which are listed in Table I. The merged dataset consists of 9,493 scans of 6,673 patients out of which 4,050 are COVID-19 positive, 2,274 have community-acquired pneumonia (CAP), and remaining 3,169 are healthy.

TABLE I  
LIST OF SOURCES FROM WHERE CHEST CT DATA HAS BEEN ACQUIRED

Source	Patients	COVID-19	CAP	Healthy
[38]	1,525	1,495	1,027	0
[11]	112	112	0	0
[39]	2,265	0	0	2,265
[40]	289	275	0	146
[41]	2,482	2,168	1,247	758
<b>Total</b>	<b>6,673</b>	<b>4,050</b>	<b>2,274</b>	<b>3,169</b>

A total of 2,522 scans are collected from the Third Hospital of Jilin University, Ruijin Hospital of Shanghai Jiao Tong University, Tongji Hospital of Huazhong University of Science and Technology, Shanghai Public Health Clinical Center of Fudan University, and Hangzhou First Peoples Hospital of Zhejiang University [38]. The scans are further divided into 1,495 COVID-19 positive cases which are confirmed by rRT-PCR and 1,027 scans belong to CAP patients. The dataset used by [11] consists of only 112 COVID-19 cases as the study revolves around key findings of COVID-19. [39] proposed classification of CAP cases versus the healthy ones, hence, only healthy patients’ scans of 2,265 have been collected from the Lung Image Database Consortium (LIDC) [42].

From [40] study, 275 CT scans are obtained from 143 positive COVID-19 patients. The study combined this data with 146 healthy patients’ scans. [41] is a publicly available CT scan dataset which is composed of 4,173 scans of 210 patients. The scans are further categorised into 2,168 scans, corresponding to 80 COVID-19 infected patients confirmed by rRT-PCR, 1,247 scans of CAP with 16 scans per patient on average and 758 healthy scans. The data is collected from

the Public Hospital of the Government Employees and the Metropolitan Hospital of Lapa, both in Sao Paulo, Brazil.

The scans and their labels from five different data sources were pre-processed, initially, by segregating the thorax region of both lungs from the background. These regions of a scan were segregated by applying a gray-level distribution of the Wiener-filtered image where different spikes of the distribution correspond to the lung, fat and muscle of the thorax region [43]. The lung CT scan is a combination of X-ray photons taken from different angles to produce cross-sectional slices of the lungs, therefore, arbitrarily two images per scan were selected. Further, automated semantic segmentation was applied to identify the infected region of interests (ROIs), such as, different organs and lesions, from the CT slices which are crucial information for both diagnosis and quantification of the disease [44]. For this purpose, a commonly used medical image segmentation model, UNet++, trained on LIDC by [29], was used to extract ROIs from the image. The segmentation of GGO at an early stage of the disease can be seen on the top whereas bottom scans show the segmentation of both GGO and CP at the critical stage of the disease as shown in Figure 2.

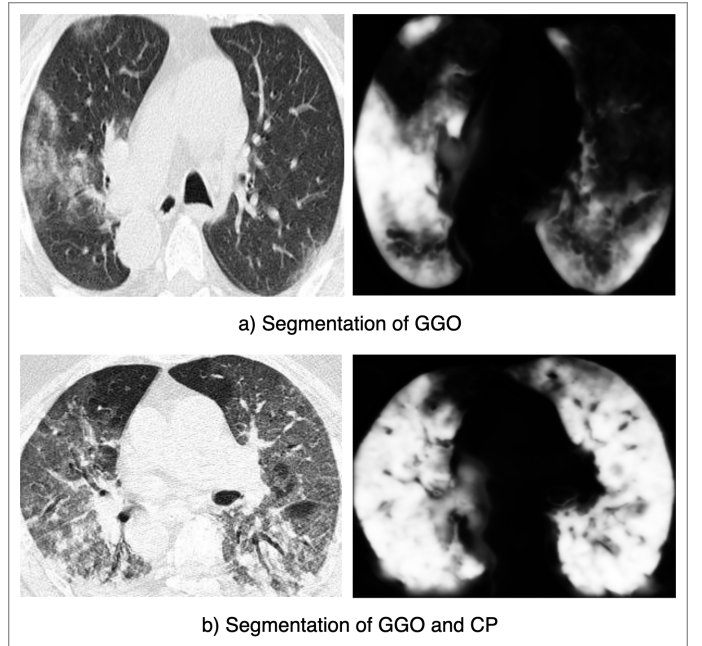


Fig. 2. Segmentation of GGO and CP from lung CT

The data augmentation mitigates the issue of limited training data by adding synthesized image-label pairs into the training set. The pre-processed data was augmented with affine transformation which consists of 15 and 20 degrees rotation and translation respectively, random crop and horizontal flip [40]. The scans gathered from multiple sources having different sizes were rescaled to 224x224 pixels and normalized using the per channel mean and standard deviation of the ImageNet dataset. An end-to-end data pre-processing, model training, and diagnosis pipeline are demonstrated in Figure 3.

The training of deep learning models on a comparatively

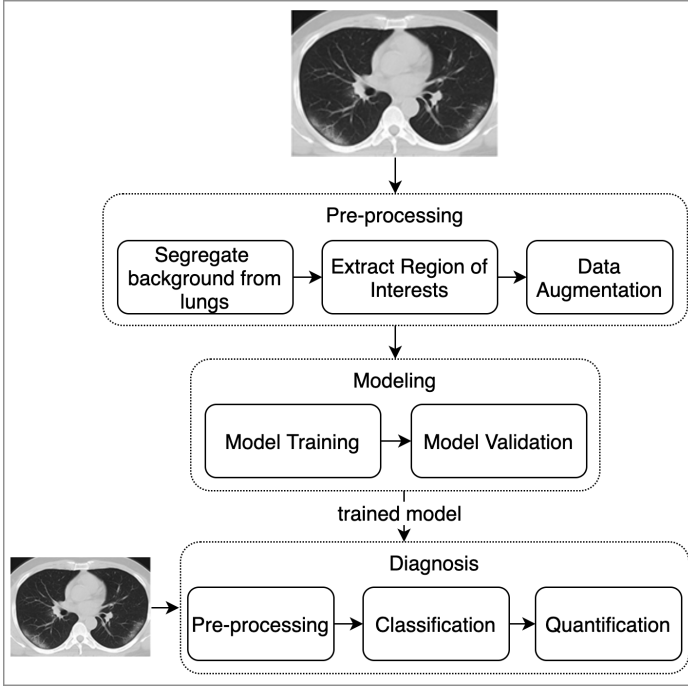


Fig. 3. End-to-End data pre-processing, model training, and diagnosis pipeline

small dataset may lead to over-fitting where the model performs well on the training dataset, however, it doesn't generalise. In order to mitigate this limitation, transfer learning techniques have been adopted which acquire knowledge on a specific problem and reduce it to a different but related task [45]. Although, transfer learning is usually performed to fine-tune only the final fully-connected (FC) layer(s) of a pre-trained network to a new domain [46], [47], it does not guarantee state-of-the-art accuracy, particularly on relatively different tasks. Hence, in this work, a meta-transfer learning approach has been used for model training which fine-tunes an increasing number of layers of the network based on the complexity and relevance of both tasks as proposed by [26].

For the disease classification modelling, a 50-layers Residual Network (ResNet) [48] was used with weights pre-trained on the ImageNet dataset. ResNet-50 is composed of a set of residual blocks stacked on top of the input layer and followed by an FC layer. A block consists of a sequence of two convolution layers with filter sizes 1x1 and 3x3, respectively, where a stride of 2 is used by the first convolution layer to reduce feature map size. ResNet-50 provides a good trade-off between training time and performance. Generally, the first few layers of the network capture low-level features of the image like edges, curves, etc., where subsequent layers learn shapes and more abstract features. The final layers have learned more specific features corresponding to a particular problem in-hand. The pre-trained ResNet-50 network was fine-tuned on ROIs extracted from the CT scans. The network was fine-tuned in an iteratively increasing number of blocks starting from the FC layer, while the lower blocks of the network act as a fixed feature extractor. However, a block with its successive

blocks was fine-tuned at a time, as elaborated in [26]. A schematic view of ResNet-50 architecture, labelled with the block numbers, can be seen in Figure 4.

The weights of the network were trained using Adam optimiser [49] with a variable learning rate which decays by a factor of 10 on every alternative epoch with an initial value of 0.01. The training process automatically ends in case of no improvement found in the cross-validation loss for consecutive 3 epochs. The weights were initialised with Xavier-initialisation [50] and a training batch-size of 16 was chosen. To classify a scan as COVID-19 positive or negative, the ratio of positive classified segments was compared against negative segments whereas the scan was declared positive when the ratio exceeds 0.5 threshold. The dataset was randomly divided into train, test, and validation sets with a ratio of 70%, 15%, and 15% respectively. The CAP category was excluded in the final training experiment. In order to thoroughly evaluate the proposed approach, a number of experiments have been carried-out by fine-tuning one layer/block per training cycle. Table II summarises the number of positive and negative images in each set.

TABLE II  
DATASET DISTRIBUTION INTO TRAINING, TESTING AND VALIDATION SETS

Partition	COVID-19	Healthy	Total
Training	2,836	2,219	5,055
Testing	607	475	1,082
Validation	607	475	1,082
<b>Total</b>	<b>4,050</b>	<b>3,169</b>	<b>7,219</b>

The network's hyper-parameters recommended by the Meta-RL [27] are listed in Table III.

TABLE III  
HYPER-PARAMETER SEARCH SPACE

Parameters	Values (range)
Dropout Rate	0.0-0.5
Learning Rate	0.01-0.00001
Momentum	0.6-0.99

The next step of the proposed pipeline is the quantification of the disease. Not all patients diagnosed with positive COVID-19 will need intensive care. Accordingly, [51] classified COVID-19 into four severity levels including *minimal*, *common*, *severe* and *critical*. The *minimal* and *common* severity patients both show clinical symptoms however only in the *common* severity level the chest CT scan shows opacity in the lung. The *severe* cases have signs of either respiratory distress, low blood oxygen saturation, or partial pressure of arterial blood oxygen [52]. The *critical* patients are reported with organs and respiratory failure needing ventilation and intensive care. The CT diagnosis and quantification of the disease could be very useful for patients falling under *common* or *severe* severity levels.

The severity score is the sum of the area of all the infectious segments that are found in the positively classified scans. Therefore, the gradient-weighted class activation maps (CAMs) is employed for detecting characteristic features from the

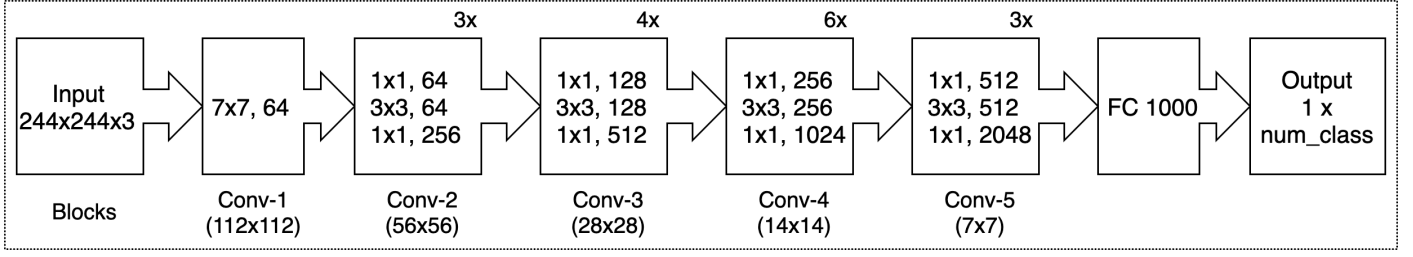


Fig. 4. Schematic view of ResNet-50 architecture where all five convolutional blocks are re-trainable. The notation  $K \times K, N$  in the convolutional block denotes a filter of size  $K$  with  $N$  channels. The number on the top of the block represents its repetition. The final layer predicts the number of output classes which is denoted by `num_class`.

image [53]. The feature maps of the last convolution layer retain high enough spatial information which can be used for coarse localization of the pathological regions, whose size can, in turn, be related to the disease severity.

#### Algorithm 1 Disease severity quantification algorithm

- 1:  $A^k \in \mathbb{R}^{h \times w} \cdot \cdot k = 1, \dots, N \triangleright A$  is activation maps of the last convolutional layer,  $h$  and  $w$  are height and width of a feature map, and  $N$  represents total number of feature maps
- 2:  $w^c = \frac{1}{h \times w} \sum_{i=1}^w \sum_{j=1}^h \frac{dy^c}{dA_{ij}} \triangleright$  weights of the class  $c$  scores with respect to feature maps of  $A$
- 3:  $Q = ReLU(\sum_{k=1}^N \max_{i=1}^w \max_{j=1}^h (w_k^c \times A_{ij}^k)) \triangleright ReLU$  is applied to features of positive influence on  $c$

The disease severity quantification algorithm is outlined in Algorithm 1 which has been computed for each segment of a scan for which the model has classified infected. The quantification value  $Q$  for all the segments of a scan has been summed up which is elaborated in Figure 5.

#### B. Assessment of the Treatment

The assessment of the treatment is the post-processing phase of the approach which comes after diagnosis and quantification of disease. The quantification score is further used for patient-specific monitoring of the disease progression during the course of treatment. The progression is monitored by the severity score  $S$  which normalizes the quantification score of a particular day by the initial score, see Equation 1. The severity score is extrapolated to forecast the condition of the critical patients which allows the hospitals to plan ahead for the crucial resources like medical staff, ventilators and intensive care units (ICUs).

$$S = \frac{Q_{current}}{Q_{initial}} \times 100 \quad (1)$$

The disease progression is plotted over time since the beginning of treatment along with prior medical history and medication prescribed during the treatment. Since there is no vaccine available for COVID-19, this approach correlates the progression of the disease with prescribed medicines. Such analysis can help physicians to assess the effectiveness of medication on patients and come up with a pattern of the

patient's severity level and medication. fully-connected (FDA) granted permission to use some general medicines, mentioned earlier, for the treatment of severely affected COVID-19 patients. Those medicines are correlated with the progression to evaluate their effectiveness along with the clinical data and prior medical history of the patient to predict the most suitable set of medicines for the new patients [54]. The COVID-19 prognostics has been demonstrated in Figure 5.

### III. EXPERIMENTAL RESULTS

A comprehensive set of experiments has been conducted to evaluate the effectiveness of the proposed approach. These experiments evaluate various models which are fine-tuned on a different combination of the layers of a network. The experiments were performed on Nvidia Tesla v100 GPU. The disease classification is modelled using ResNet-50 architecture. The architecture takes less time to train a model as compared to the other architectures such as Inception-v3 [55] and Inception-ResNet-v2. The network was fine-tuned in an iteratively increasing number of blocks starting from the final block, only one block was fine-tuned in a training cycle at a time.

TABLE IV  
THE BLOCK/LAYER WISE RESULTS OF THE COVID-19 CLASSIFICATION MODEL

Block/Layer	Accuracy	Precision	Recall	F1 Score
FC	93.75	92.15	90.53	91.15
Conv-5	91.25	90.39	87.19	88.53
Conv-4	88.87	87.87	83.75	85.77
Conv-3	86.27	85.23	80.07	82.57
Conv-2	84.97	83.33	78.57	80.88
Conv-1	82.14	80.68	76.07	78.31

Table IV summarises the performance of the block-wise network fine-tuning on hold-out test-set. The performance metrics consist of accuracy, precision, recall, and F1 score. The fine-tuning of the final FC layer gives the best classification with 93% accuracy, 92% precision, 90% recall, and 91% F1 score. These results were extracted from a training cycle consuming pre-processed segments of images. However, the fine-tuning of the rest of the blocks could outperform the current best accuracy in case of the availability of more training data. The precision and recall show promising results with a low false-negative rate.

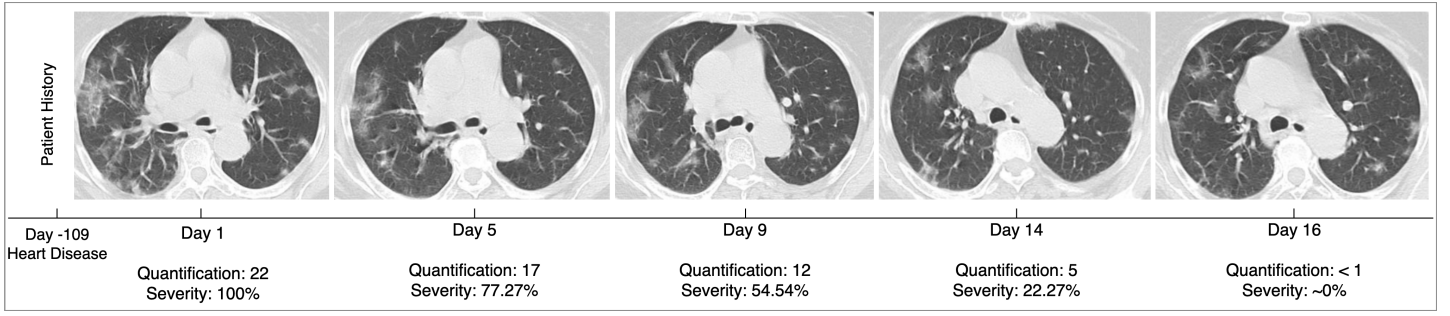


Fig. 5. The COVID-19 progression analysis which quantifies the current severity along with relative progression of the disease

#### IV. CONCLUSIONS

This paper presents an effective and efficient pipeline for diagnosis and triage of a suspected patient which is crucial to control COVID-19 and to provide better treatment of the infected patients. The proposed approach uses deep learning-based CT image classification techniques for the diagnosis of the disease. These techniques usually require large training datasets, however, the transfer learning technique was used to adapt a pre-trained model on the available CT scan data. In fact, deep learning techniques are highly sensitive which requires focusing on critical areas of the CT scan for precise diagnosis. Hence, a deep learning-based image segmentation technique was applied to the raw images as a pre-processing step to extract useful features from the image. The diagnosis of the disease from a CT scan takes significantly less time than the rRT-PCR test. Once a patient is admitted to the hospital for treatment based on the results of the diagnosis, the same process repeats periodically during the course of the treatment. Further, the deep learning classification model also quantifies the diseases by computing the area of GGO and CP which are identified by the model as infectious segments. This process helps physicians to monitor the progression of the disease over time from an early stage of the treatment. Moreover, in the absence of anti-viral medicine for COVID-19, a post-processing analysis correlates the general medication prescribed to a patient with the quantification of the disease severity score for better assessment of the treatment.

The novelty of this work is the development of an end-to-end pipeline for timely and accurate diagnosis, quantification, progression analysis, and assessment of treatment of COVID-19. The effectiveness of the approach relies on the performance of the diagnosis both in terms of speed and accuracy. Hence, the Automatic Machine learning approach, such as MLL has been used to find the optimal number of network blocks that need to be fine-tuned. The final model gave an accuracy of 93% on the hold-out set with high precision and sensitivity.

#### V. FUTURE DIRECTIONS

The disease diagnosis process is composed of two deep learning models including segmentation and classification. These models have millions of parameters across multiple layers/blocks which makes the modelling process hard to

explain and less transparent. Perhaps, only technical experts can interpret these models in the context of the transformations and operations that the data goes through. However, for the end-users, mostly high-level performance measures are the only parameter to trust in the working of the models. It would become critical when the end-user of these models belongs to the domain of medical science who needs to make a decision based on very abstract insights. Therefore, the prognosis of the disease can be further enhanced by interpreting the following areas of diagnosis:

- 1) Data Audit: What if a model is overfitted due to class biases and gives high performance? A detailed data audit that covers the class distribution along with other information would be useful for the end-user.
- 2) Model Interpretation:
  - a) Along with the data audit, explainability of the black box deep learning models by demonstrating how a model processed a scan by interpreting each layer/block of the network?
  - b) What kind of examples does the model perform poorly on?
  - c) Can a prediction be attributed to adversarial behavior, or to undesirable priors in the training set?
- 3) Quantification of the disease: For a COVID-19 positive case, how critical is the condition of the patient. One possible solution could be precise quantification of the disease by volumetric measurement of multiple patchy areas of GGO and shadows of the CP of the lungs.
- 4) Localization of Disease: The model's outcome of COVID-19 is based on the patches which actually belong to COVID-19 or CAP. This can be interpreted by visualizing the final feature maps of the network to discriminative regions of the scan. This can be achieved by localization of disease using Partial Dependence Plots (PDPs) [56], Gradient-weighted Class Activation Mapping (Grad-CAM) [57] and saliency mapping [58].
- 5) Relating insights of scan and clinical data: What value patient's clinical data, demographics, oxygen saturation level, etc. can add along with the diagnosis of the scan towards explainability. A possibility is through the clustering of the clinical data and diagnosis to uncover insightful patterns.

## ACKNOWLEDGEMENTS

The authors wish to thank Dr. Muhammad Naeem medical specialist at Services Hospital for taking part in the subject discussion and review of this work.

## REFERENCES

- [1] WHO, "Coronavirus disease 2019 (covid-19) situation report - 76," <https://www.who.int/docs/default-source/coronaviruse/situation-reports/20200405-sitrep-76-covid-19.pdf>, Apr. 2020.
- [2] T. Ai, Z. Yang, H. Hou, C. Zhan, C. Chen, W. Lv, and et al., "Correlation of chest ct and rt-pcr testing in coronavirus disease 2019 (covid-19) in china: A report of 1014 cases," *Journal of Radiology*, vol. 1, Feb. 2020.
- [3] T. H. Rainer, P. K. S. Chan, M. Ip, N. Lee, and et al., "The spectrum of severe acute respiratory syndrome-associated coronavirus infection," *Annals of Internal Medicine*, vol. 140, 2020.
- [4] Y. Fang, H. Zhang, J. Xie, M. Lin, L. Ying, P. Pang, and W. Ji, "Sensitivity of chest ct for covid-19: Comparison to rt-pcr," *Journal of Radiology*, vol. 296, no. 2, Aug. 2020.
- [5] F. Shi, J. Wang, J. Shi, Z. Wu, Q. Wang, Z. Tang, and et al., "Review of artificial intelligence techniques in imaging data acquisition, segmentation and diagnosis for covid-19," *Computing Research Repository (CoRR)*, vol. 2004.02731, Apr. 2020.
- [6] A. Tahamtan and A. Ardebili, "Real-time rt-pcr in covid-19 detection: issues affecting the results," *European Journal of Radiology*, vol. 20, no. 5, pp. 453–454, May 2020.
- [7] O. Gozes, M. Frid-Adar, H. Greenspan, P. D. Browning, H. Zhang, W. Ji, and et al., "Rapid ai development cycle for the coronavirus (covid-19) pandemic: Initial results for automated detection and patient monitoring using deep learning ct image analysis," *Computing Research Repository (CoRR)*, vol. 2003.05037, Mar. 2020.
- [8] C. Long, H. Xu, Q. Shen, X. Zhang, and et al., "Diagnosis of the coronavirus disease (covid-19): rrt-pcr or ct?" *European Journal of Radiology*, vol. 126, Mar 2020.
- [9] S. Basu, S. Mitra, and N. Saha, "Deep learning for screening covid-19 using chest x-ray images," *Journal of med-archive (medRxiv)*, vol. 10.1101/2020.05.04.20090423, May 2020.
- [10] Y. Wang, H. Kang, X. Liu, and et al., "Combination of rt-qpcr testing and clinical features for diagnosis of covid-19 facilitates management of sars-cov-2 outbreak," *Journal of Medical Virology*, vol. 10.1002/jmv.25721, Feb. 2020.
- [11] X. Ding, J. Xu, J. Zhou, and Q. Long, "Chest ct findings of covid-19 pneumonia by duration of symptoms," *European Journal of Radiology*, vol. 127, Jun. 2020.
- [12] X. He, X. Yang, S. Zhang, J. Zhao, Y. Zhang, E. Xing, and P. Xie, "Sample-efficient deep learning for covid-19 diagnosis based on ct scans," *Journal of med-archive (medRxiv)*, vol. 10.1101/2020.04.13.20063941, Apr. 2020.
- [13] T. Liang and et al., "Handbook of covid-19 prevention and treatment," Zhejiang University School of Medicine, Mar. 2020.
- [14] FDA, "Fda fact sheet: Serological testing for antibodies to sars-cov-2 infection," U.S. Food and Drug Administration, pp. 1–2, Apr. 2020.
- [15] WHO, "Coronavirus disease 2019 (covid-19) situation report - 41," <https://www.who.int/docs/default-source/coronaviruse/situation-reports/20200301-sitrep-41-covid-19.pdf>, Mar. 2020.
- [16] Q.-X. Long, X.-J. Tang, Q.-L. Shi, Q. Li, H.-J. Deng, J. Yuan, J.-L. Hu, W. Xu, Y. Zhang, F.-J. Lv et al., "Clinical and immunological assessment of asymptomatic sars-cov-2 infections," *Nature medicine*, 2020.
- [17] Y. LeCun, Y. Bengio, and G. Hinton, "Deep learning," *Nature*, vol. 521, pp. 436–444, May 2015.
- [18] S. Wang, B. Kang, J. Ma, X. Zeng, M. Xiao, and et al., "A deep learning algorithm using ct images to screen for corona virus disease (covid-19)," *Journal of med-archive (medRxiv)*, vol. 10.1101/20023028, Apr. 2020.
- [19] N. Zhu, D. Y. Zhang, W. L. Wang, and et al., "A novel coronavirus from patients with pneumonia in china," *The New England Journal of Medicine (NEJM)*, vol. 382, pp. 503–509, Feb. 2019.
- [20] N. Chen, M. Zhou, X. Dong, and et al., "Epidemiological and clinical characteristics of 99 cases of 2019 novel coronavirus pneumonia in wuhan, china: a descriptive study," *The Lancet*, vol. 395, p. 507–513, Jan. 2020.
- [21] S. M. Lesko and A. A. Mitchell, "An assessment of the safety of pediatric ibuprofen: A practitioner-based randomized clinical trial," *JAMA: The Journal of the American Medical Association*, vol. 273, no. 12, pp. 929–933, Mar. 1995.
- [22] C. Pierce and B. Voss, "Efficacy and safety of ibuprofen and acetaminophen in children and adults: A meta-analysis and qualitative review," *Annals of Pharmacotherapy* 2010, vol. 44, no. 3, pp. 489–506, Jul. 2010.
- [23] Y. C. Wen, F. Y. Hsiao, K. A. Chan, Z. F. Lin, L. J. Shen, and C. C. Fang, "Acute respiratory infection and use of nonsteroidal anti-inflammatory drugs on risk of acute myocardial infarction: A nationwide case-crossover study," *The Journal of infectious diseases*, vol. 215, no. 4, pp. 503–509, Feb. 2017.
- [24] R. M. Johnson and J. M. Vinetz, "Dexamethasone in the management of covid-19," *British Medical Journal*, vol. 370, 2020.
- [25] O. Russakovsky, J. Deng, H. Su, J. Krause, and et al., "Imagenet large scale visual recognition challenge," *International Journal Computer Vision*, vol. 115, no. 3, pp. 211–252, Dec. 2015.
- [26] A. R. Ali, M. Budka, and B. Gabrys, "Towards meta-learning of deep architectures for efficient domain adaptation," *Pacific Rim International Conference on Artificial Intelligence (PRICAI)*, LNCS, vol. 11671, pp. 66–79, Aug. 2019.
- [27] —, "A meta-reinforcement learning approach to optimize parameters and hyper-parameters simultaneously," *Pacific Rim International Conference on Artificial Intelligence (PRICAI)*, LNCS, vol. 11671, pp. 93–106, Aug. 2019.
- [28] F. Shariaty and M. Mousavi, "Application of cad systems for the automatic detection of lung nodules," *Informatics in Medicine Unlocked*, vol. 15, 2019.
- [29] Z. Zhou, M. Siddiquee, N. Tajbakhsh, and J. Liang, "Unet++: A nested u-net architecture for medical image segmentation," *DLMIA, ML-CDS 2018*, vol. 1807.10165, Sep. 2018.
- [30] M. F. Adar, A. B. Cohen, R. Amer, and H. Greenspan, "Improving the segmentation of anatomical structures in chest radiographs using u-net with an imagenet pre-trained encoder," *Computing Research Repository (CoRR)*, vol. 1810.02113, Oct. 2018.
- [31] A. V. Dalca, E. Yu, P. Golland, B. Fischl, M. R. Sabuncu, and J. E. Iglesias, "Unsupervised deep learning for bayesian brain mri segmentation," *Computing Research Repository (CoRR)*, vol. 1904.11319, Apr. 2019.
- [32] J. Chen, L. Wu, J. Zhang, L. Zhang, D. Gong, Y. Zhao, and et al., "Deep learning-based model for detecting 2019 novel coronavirus pneumonia on high-resolution computed tomography: a prospective study," *Journal of med-archive (medRxiv)*, vol. 92, pp. 538–539, Mar. 2020.
- [33] T. Liang, Z. Liu, C. C. Wu, C. Jin, H. Zhao, Y. Wang, Z. Wang, and et al., "Evolution of ct findings in patients with mild covid-19 pneumonia," *Journal of European Radiology*, vol. 10.1007/s00330-020-06823-8, pp. 1–9, Apr. 2020.
- [34] Y. Li and L. Xia, "Coronavirus disease 2019 (covid-19): Role of chest ct in diagnosis and management," *American Journal of Roentgenology*, vol. 10.2214/AJR.20.22954, pp. 1–7, Mar. 2020.
- [35] X. Li, X. Zeng, B. Liu, and Y. Yu, "Covid-19 infection presenting with ct halo sign," *Radiology: Cardiothoracic Imaging*, vol. 2, no. 1, Feb. 2020.
- [36] T. Liu, P. Huang, H. Liu, L. Huang, M. Lei, W. Xu, X. Hu, J. Chen, and B. Liu, "Spectrum of chest ct findings in a familial cluster of covid-19 infection," *Radiology: Cardiothoracic Imaging*, vol. 2, no. 1, Feb. 2020.
- [37] C. Jin, W. Chen, Y. Cao, Z. Xu, X. Zhang, L. Deng, C. Zheng, J. Zhou, H. Shi, and J. Feng, "Development and evaluation of an ai system for covid-19 diagnosis," *Journal of med-archive (medRxiv)*, vol. 10.1101/2020.03.20.20039834, Jan. 2020.
- [38] L. Suny, Z. Moy, F. Yany, L. Xiay, F. Shany, Z. Dingy, and et al., "Adaptive feature selection guided deep forest for covid-19 classification with chest ct," *Computing Research Repository (CoRR)*, vol. 2005.03264, May 2020.
- [39] Q. Song, L. Zhao, X. Luo, and X. Dou, "Using deep learning for classification of lung nodules on computed tomography images," *Journal of Healthcare Engineering*, vol. 2017, Aug. 2017.
- [40] J. Zhao, Y. Zhang, X. He, and P. Xie, "Covid-ct-dataset: a ct scan dataset about covid-19," *Computing Research Repository (CoRR)*, vol. 2003.13865, Mar. 2020.
- [41] E. Soares and P. Angelov, "A large dataset of real patients ct scans for covid-19 identification," *Harvard Dataverse V1*, Jun. 2020.
- [42] LIDC-IDRI, "Lung image database consortium," Jun. 2020.

- [43] E. Magdy, N. Zayed, and M. Fakh, "Automatic classification of normal and cancer lung ct images using multiscale am-fm features," *International Journal of Biomedical Imaging*, vol. 10.1155/2015/230830, Sep. 2015.
- [44] D. P. Fan, T. Zhou, G. P. Ji, Y. Zhou, G. Chen, H. Fu, J. Shen, and L. Shao, "Inf-net: Automatic covid-19 lung infection segmentation from ct images," *Computing Research Repository (CoRR)*, vol. 2004.14133, May 2020.
- [45] J. Yosinski, J. Clune, Y. Bengio, and H. Lipson, "How transferable are features in deep neural networks?" in *Proceedings of the 27th International Conference on Neural Information Processing Systems - Volume 2*, ser. NIPS'14. Cambridge, MA, USA: MIT Press, 2014, pp. 3320–3328.
- [46] X. Wang, Y. Peng, L. Lu, Z. Lu, and et al., "Chestx-ray8: Hospital-scale chest x-ray database and benchmarks on weakly-supervised classification and localization of common thorax diseases," *Computing Research Repository (CoRR)*, vol. 1705.02315, 2017.
- [47] H. Shin, K. Roberts, L. Lu, D. Demner-Fushman, J. Yao, and R. M. Summers, "Learning to read chest x-rays: Recurrent neural cascade model for automated image annotation," *Computing Research Repository (CoRR)*, vol. abs/1603.08486, 2016.
- [48] K. He, X. Zhang, S. Ren, and J. Sun, "Deep residual learning for image recognition," in *IEEE Conference on Computer Vision and Pattern Recognition (CVPR)*, 2016, pp. 770–778.
- [49] D. P. Kingma and J. Ba, "Adam: A method for stochastic optimization," in *International Conference on Learning Representations (ICLR)*, 2015, pp. 3320–3328.
- [50] X. Glorot and Y. Bengio, "Understanding the difficulty of training deep feed-forward neural networks," in *Proceedings of the Thirteenth International Conference on Artificial Intelligence and Statistics, PMLR*, 2010.
- [51] N. H. C. NHC, "The diagnosis and treatment of pneumonia infected by novel coronavirus (5th trial edition)," Feb. 2020.
- [52] R. Yang, X. Li, H. Liu, Y. Zhen, X. Zhang, Q. Xiong, Y. Luo, C. Gao, and W. Zeng, "Chest ct severity score: An imaging tool for assessing severe covid-19," *Radiology: Cardiothoracic Imaging*, vol. 2, Mar. 2020.
- [53] B. Zhou, A. Khosla, A. Lapedriza, A. Oliva, and A. Torralba, "Learning deep features for discriminative localization," *Computing Research Repository (CoRR)*, vol. 1512.04150, Dec. 2015.
- [54] W. Liang, J. Yao, A. Chen, Q. Lv, M. Zanin, and et. al, "Early triage of critically ill covid-19 patients using deep learning," *Nature Communications*, vol. 10.1038/s41467-020-17280-8, Jul. 2020.
- [55] C. Szegedy, V. Vanhoucke, S. Ioffe, and et al., "Rethinking the inception architecture for computer vision," in *IEEE Conference on Computer Vision and Pattern Recognition, CVPR*, Jun. 2016, pp. 2818–2826.
- [56] V. Buhrmester, D. Münch, and M. Arens, "Analysis of explainers of black box deep neural networks for computer vision: A survey," *Computing Research Repository (CoRR)*, vol. 1911.12116v1, Nov. 2019.
- [57] R. R. Selvaraju, M. Cogswell, A. Das, R. Vedantam, and et al., "Grad-cam: Visual explanations from deep networks via gradient-based localization," *Computing Research Repository (CoRR)*, vol. 1610.02391v4, 2019.
- [58] T. N. Mundhenk, B. Y. Chen, and G. Friedland, "Efficient saliency maps for explainable ai," *Computing Research Repository (CoRR)*, vol. 1911.11293, 2020.